

# LogiLink®



## USB3.0 2-Bay Docking Station

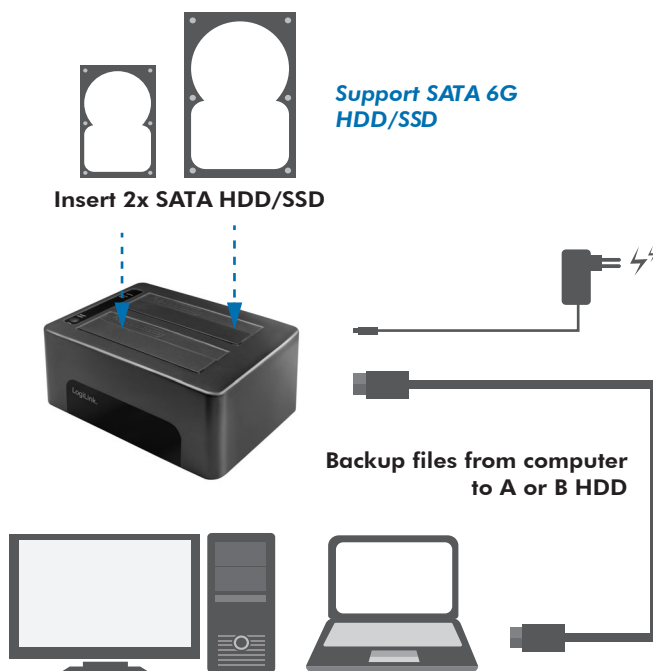
For 2.5" (6.35cm) & 3.5" (8.89cm)  
SATA HDD/SSD

Art. No.: QP0029

The compact sized portable USB3.0 2-Bay Docking Station, file backup is never easier!

### Features:

- » Compliant with USB3.0 specification
- » Backward compatible with USB3.0/2.0/1.1 devices up to 5Gbps
- » Support 2.5"/3.5" SATA HDD up to 12TB
- » Use Clone function without connecting to a computer
- » With External Power adapter
- » Power On/Off switch and LED indicator for HDD activity
- » Support USB Hot Plug and Plug-and-Play
- » Support Windows, Linux and Mac OS



Install the SATA HDD/SSD and connect to PC



QP0029



Made in China



RoHS  
compliant



\* The specifications and pictures are subject to change without notice.

\*All trade names referenced are the registered trademark of their respective owners.

# LogiLink®



## USB3.0 2-Bay Docking Station

For 2.5" (6.35cm) & 3.5" (8.89cm)  
SATA HDD/SSD

Art. No.: QP0029



### Package Contents:

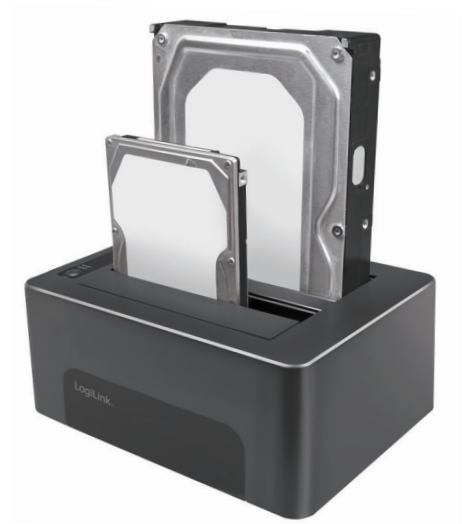
- » 1 x USB3.0 Docking Station
- » 1 x USB3.0 Cable (Type-A to Type-B)
- » 1 x Power Adapter (12V/3A)
- » 1 x User Manual

### Packaging Information:

- » Packing Dimension: mm
- » Packing Weight: kg
- » Carton Dimension: mm
- » Carton Q'ty: pcs
- » Carton Weight: kg

### Note:

- » HDD2 hard drive (target) must have larger or equal capacity to HDD1 hard drive (source), or else Clone function will not work.
- » Do not support hard drive's capacity greater than 3TB in Windows XP.



Best Connectivity



\* The specifications and pictures are subject to change without notice.  
\* All trade names referenced are the registered trademark of their respective owners.



QP0029



Made in China